

Visual Photomontages - Lot 3, Princes Hwy, Bunyip North



1 Camera Angle View 1 - OF1A0151



Camera Description:
 Canon EOS 5D Mark IV
Camera lens:
 EF17-40mm f/4L USM
 Focal lens: 40mm
 Camera elevation: 1.70m
Tripod location:
 E = 388682.29
 N = 5786574.90
 R.L. = 66.19

2 Camera Angle View 2 - OF1A0158



Camera Description:
 Canon EOS 5D Mark IV
Camera lens:
 EF17-40mm f/4L USM
 Focal lens: 40mm
 Camera elevation: 1.70m
Tripod location:
 E = 389532.17
 N = 5785850.63
 R.L. = 47.46

3 Camera Angle View 3 - OF1A0160



Camera Description:
 Canon EOS 5D Mark IV
Camera lens:
 EF17-40mm f/4L USM
 Focal lens: 19mm
 Camera elevation: 1.70m
Tripod location:
 E = 388519.93
 N = 5785044.62
 R.L. = 52.22

Map Legend

● Location assessed. Proposed works not visible.

● Location to be assessed at a future date.

Camera locations 1, 2 and 3 shown are indicative.



Photography Diagram

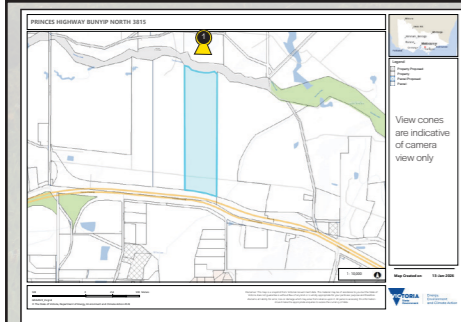
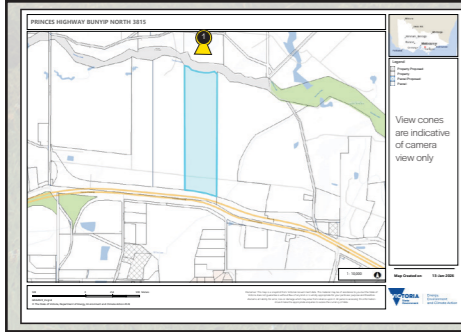


Photo by:
Tim Shaw
Date of photo:
22/12/2025
Survey of camera points:
Webster Survey Group
Date of survey:
22/12/2025

View 1: Existing conditions



Photomontage created by:
Stan Zaslavsky
Yuliya Klymenko
Konstantin Rekoichinsky

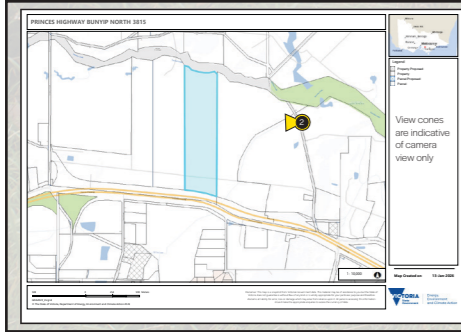
Images created using :
3D Studio Max 2025
AutoCAD 2025
Adobe Suite CC 2025

View 1: Proposed



Photo by:
Tim Shaw
Date of photo:
22/12/2025
Survey of camera points:
Webster Survey Group
Date of survey:
22/12/2025

View 2: Existing conditions



Photomontage created by:
Stan Zaslavsky
Yuliya Klymenko
Konstantin Rekoichinsky

Images created using :
3D Studio Max 2025
AutoCAD 2025
Adobe Suite CC 2025

View 2: Proposed

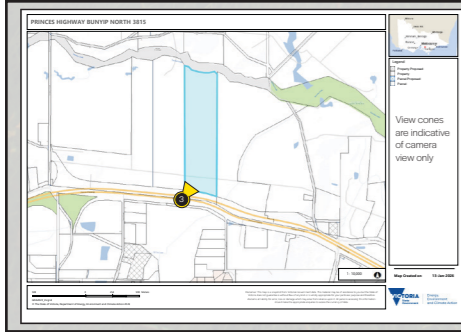
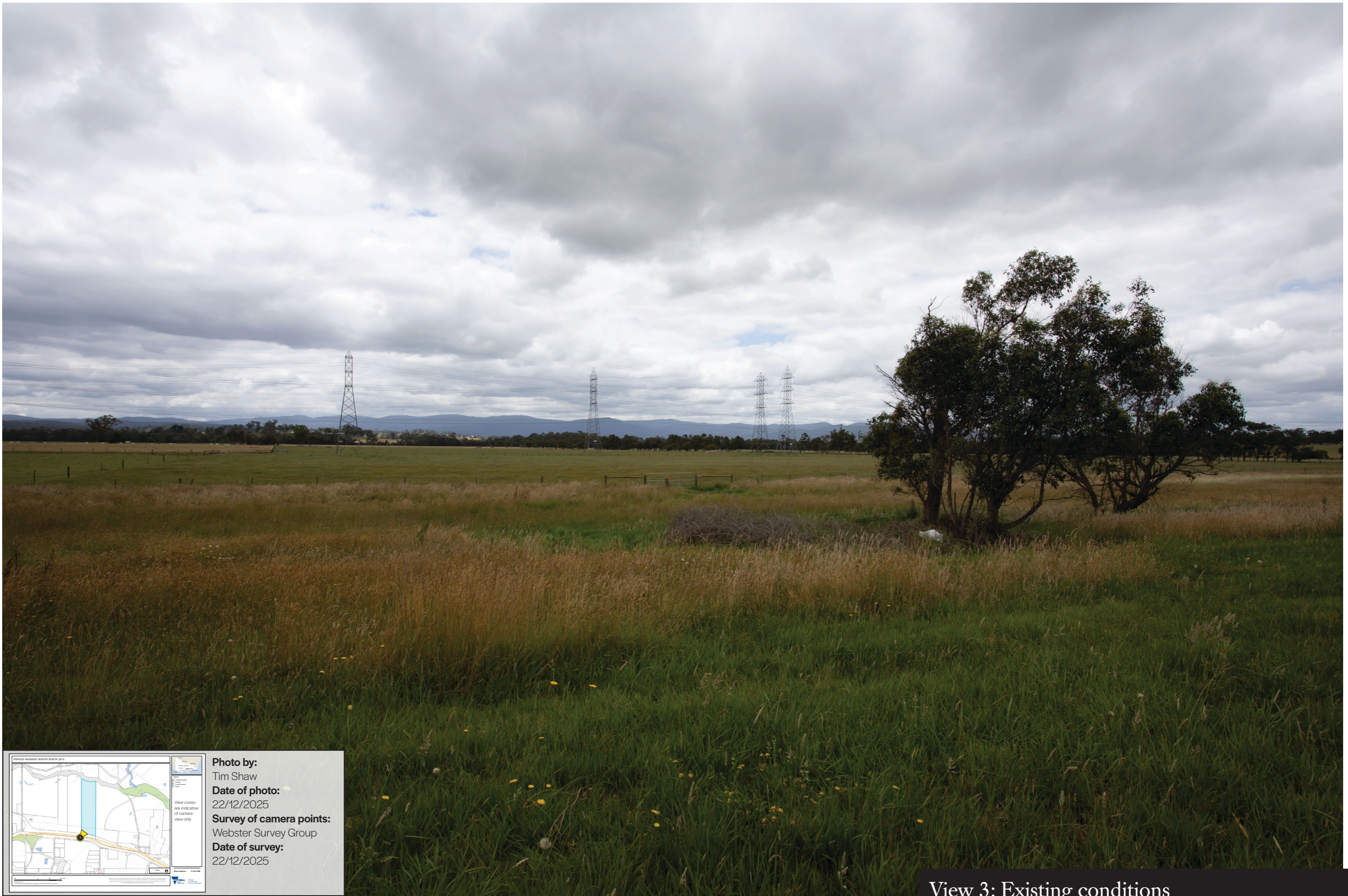


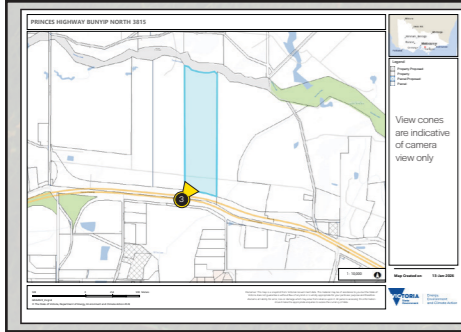
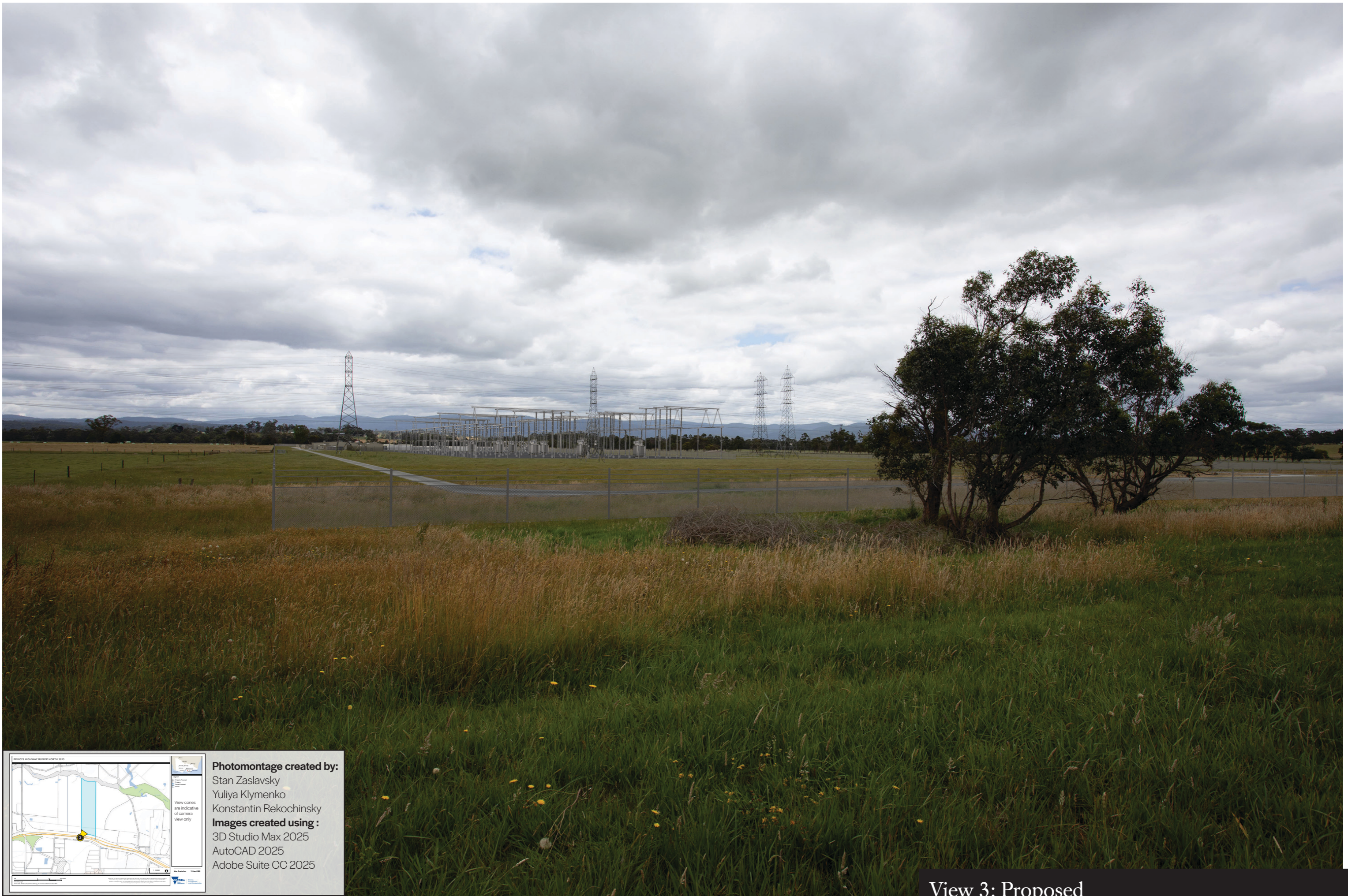
Photo by:
Tim Shaw

Date of photo:
22/12/2025

Survey of camera points:
Webster Survey Group

Date of survey:
22/12/2025

View 3: Existing conditions



Photomontage created by:
Stan Zaslavsky
Yuliya Klymenko
Konstantin Rekoichinsky

Images created using :
3D Studio Max 2025
AutoCAD 2025
Adobe Suite CC 2025

View 3: Proposed

EAGLE VISION

9 Claxton St, Adelaide SA 5000

+ 61-433-181-002 | projects@eaglevision.com.au | www.eaglevision.com.au